

Access



[TRANSPORTATION]

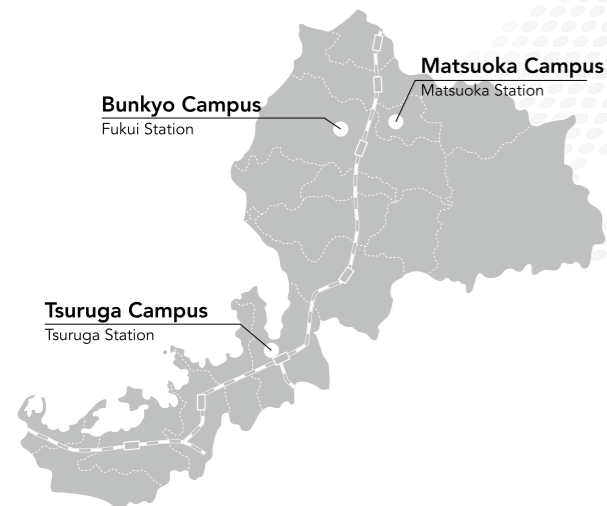
Tokyo > Komatsu (1 hour by air)

Tokyo > Fukui (3 hours and a half by train)

Nagoya > Fukui (1 hour 40 minutes by train
2 hours and 50 minutes by bus)

Osaka > Fukui (1 hour 50 minutes by train
3 hours and a half by bus)

Komatsu > Fukui (1 hour by shuttle bus)



[LOCATIONS]

Bunkyo Campus

— Faculty of Education and Regional Studies / Faculty of Engineering
3-9-1 Bunkyo, Fukui City, Fukui Prefecture
910-8507, Japan
Tel: +81-776-23-0500

Matsuoka Campus

— Faculty of Medical Sciences
23-3 Matsuoka-shimoaizuki, Eiheiji-cho, Yoshida-gun, Fukui Prefecture
910-1193, Japan
Tel: +81-776-61-3111

Tsuruga Campus

— Research Institute of Nuclear Engineering
1-2-4 Kanawa-cho, Tsuruga City, Fukui Prefecture
914-0055, Japan
Tel: +81-770-25-0021

UNIVERSITY OF FUKUI

Overview 2015



Bunkyo Campus



Matsuoka Campus



Tsuruga Campus

[CONTENTS]

Our Mission ————— 03
History ————— 03
Organizational Chart ————— 04
Facts and Figures ————— 04
Faculty of Education and Regional Studies
Graduate School of Education ————— 06
Faculty of Medical Sciences
Graduate School of Medical Sciences — 08
Faculty of Engineering
Graduate School of Engineering ————— 10
Research Centers ————— 12
International Exchange ————— 14
Campus Map ————— 15
Access ————— 16



Outline

[OUR MISSION] ——— Serving as a center of academic and cultural activities, the University of Fukui maintains a high sense of ethics, under which it aims to promote world-class education and research of science and technology for peoples' well-being and to provide advanced medical services to its local residents. To this end, the University will develop human resources who are capable of contributing to society on the local, national, and global level. It will continue to further its own original and region-specific studies in education, pursue highly advanced research in science, technology, and medical sciences, and also provide professional medical care services.

[HISTORY]

May 31, 1949

Fukui University established by integrating Fukui Normal School, Fukui Normal School for Youth, and Fukui Technical College

October 1, 1978

Fukui Medical School established

April 1, 1980

Fukui Medical School officially opened

October 1, 1983

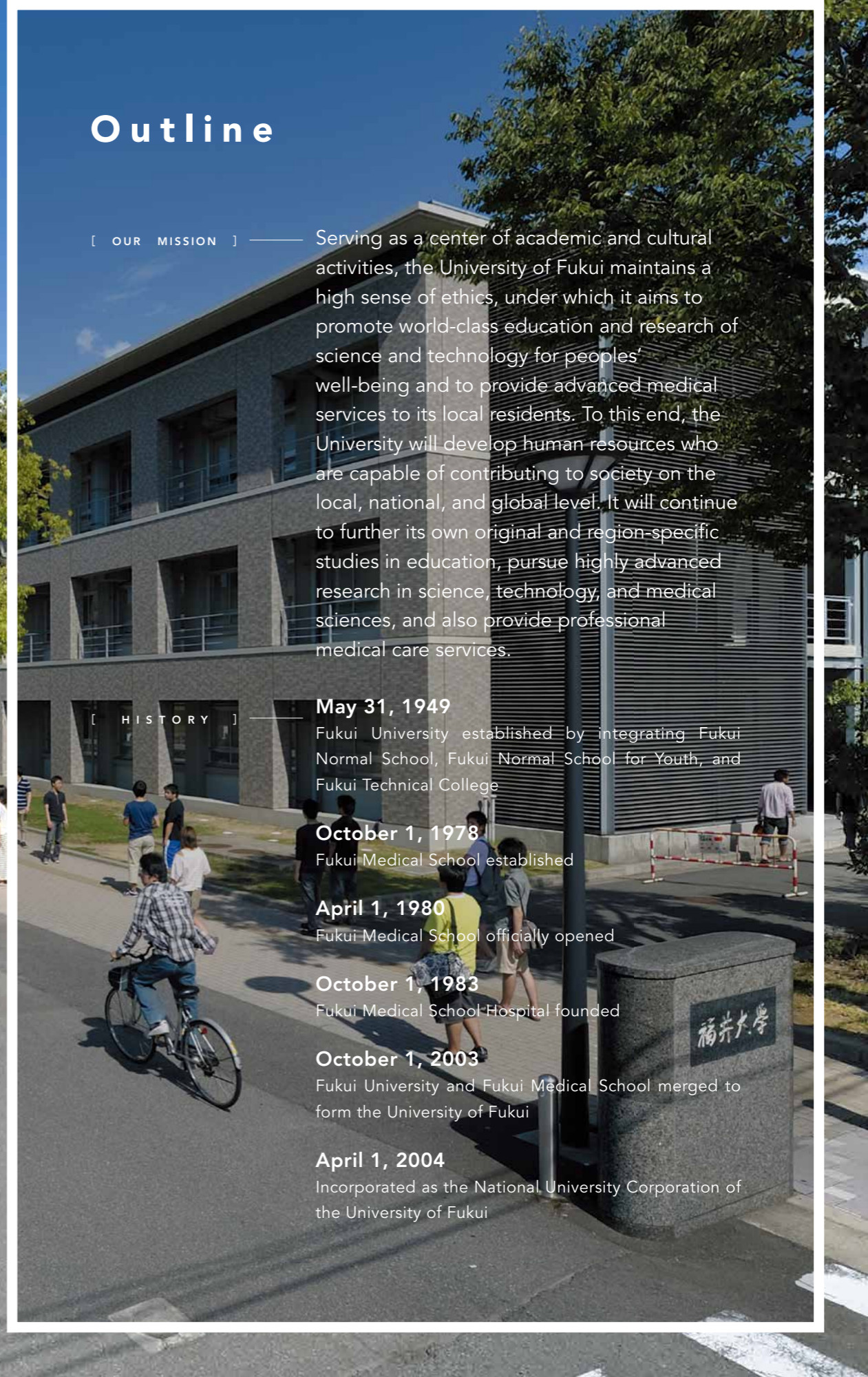
Fukui Medical School Hospital founded

October 1, 2003

Fukui University and Fukui Medical School merged to form the University of Fukui

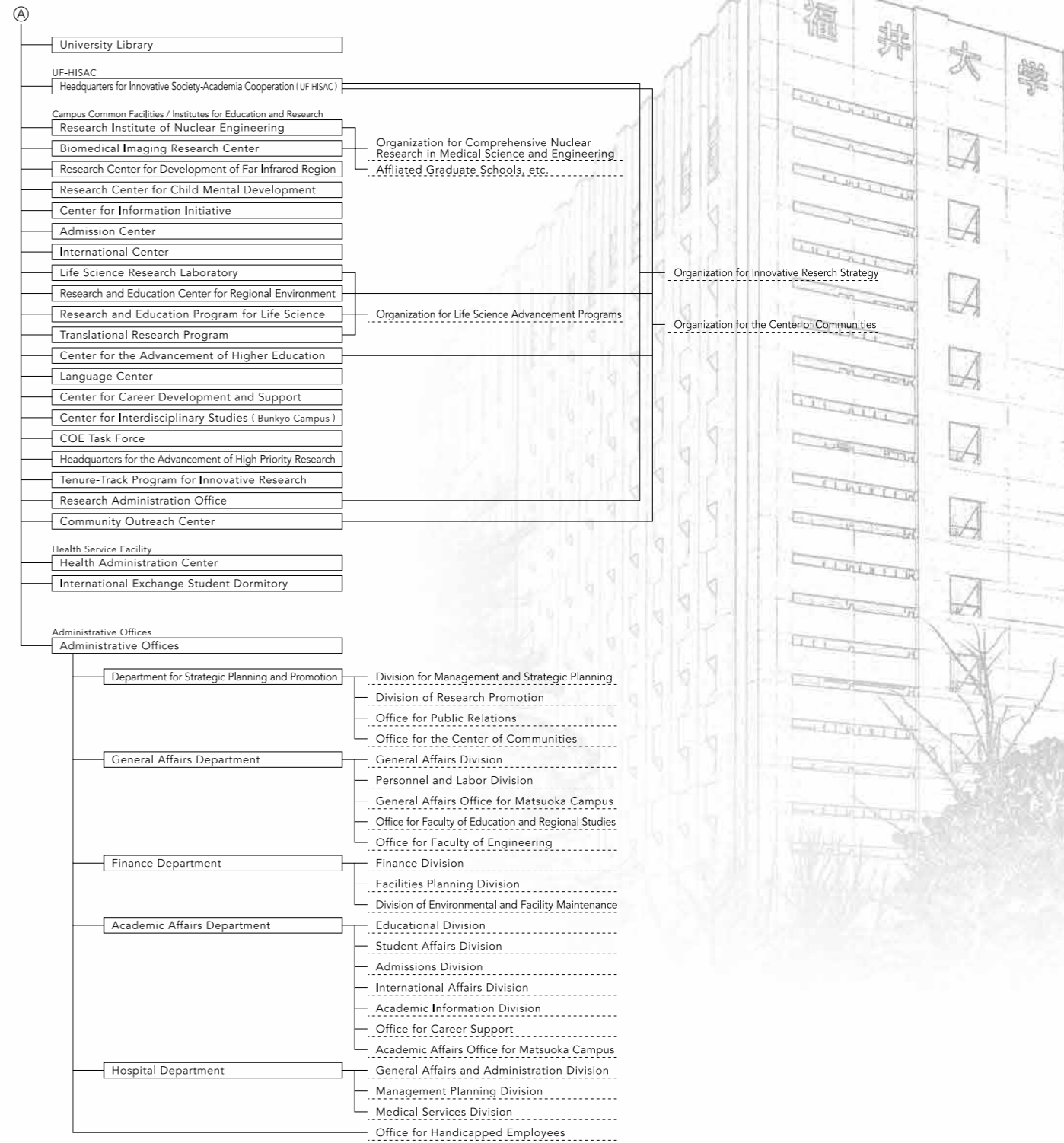
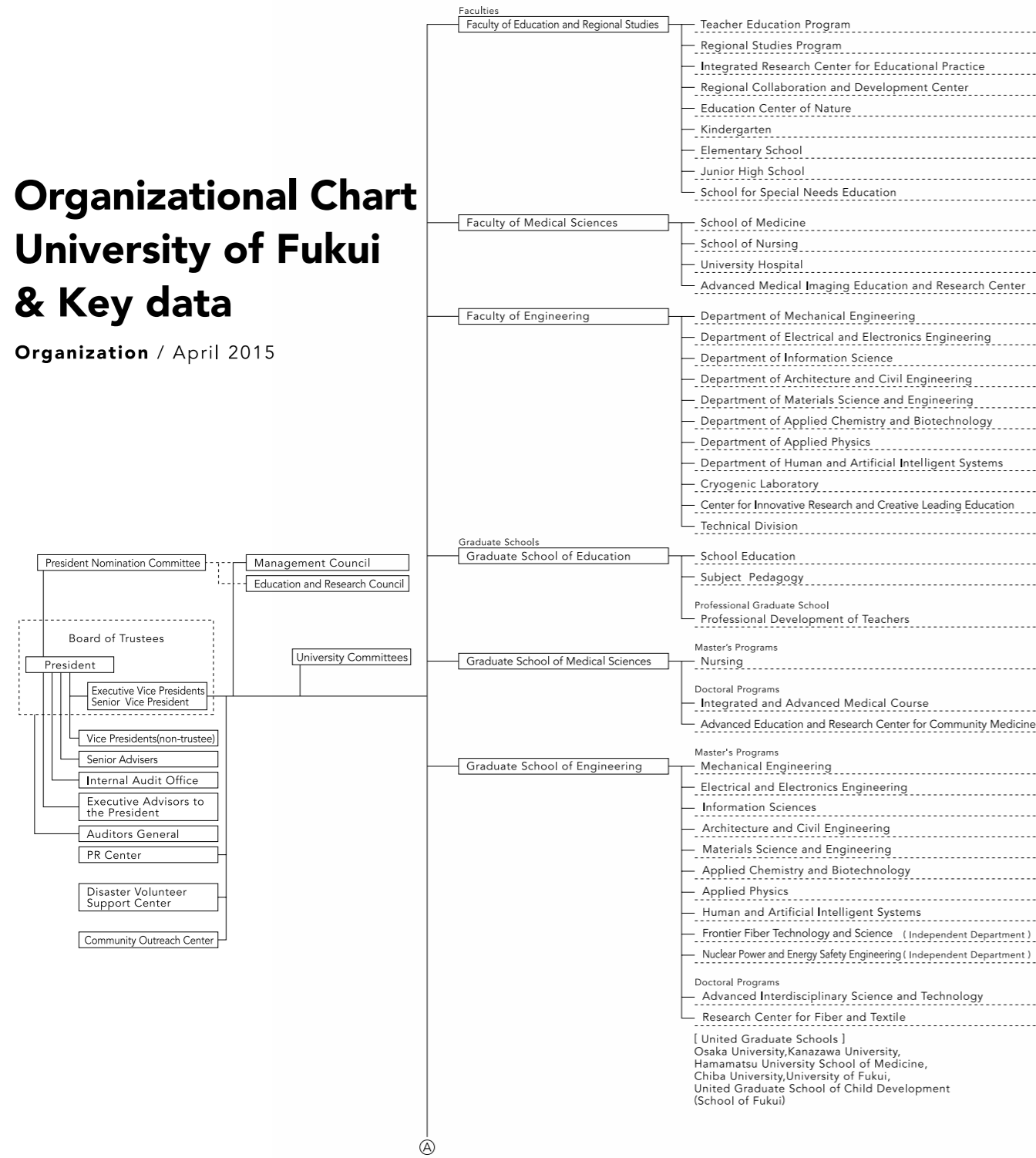
April 1, 2004

Incorporated as the National University Corporation of the University of Fukui



Organizational Chart University of Fukui & Key data

Organization / April 2015



Facts and Figures University Executives and Faculty / Staff

President	Executive Vice Presidents / Senior Vice Presidents	Auditors General	Total
1	5 (1)	2 (1)	8 (2)

The numbers in parentheses indicate non-trustee positions included in the total.

Professors	Associate Professors	Senior Assistant Professors	Assistant Professors	Assistants	Attached schools and Kindergarten Teachers	Kindergarten School Nurses	Nutrition Teachers	Subtotal	Others*	Total
172	160	65	135	7	68	4	2	613	1,170	1,783

* Medical and Technical Specialists included.

Faculties	Admission capacity	Capacity		Enrollment capacity	Current enrollment						Total	
		Admitted in the 2nd semester of the 2nd year	Admitted in the 3rd year		1st year	2nd year	3rd year	4th year	5th year	6th year		
Education and Regional Studies	160			640	167	167 (1)	166	204 (1)				704 (2)
Medical Sciences	170	5		935	174	184	166	184	116	102		926
Engineering	525		40	2,170	549 (4)	544 (3)	606 (13)	773 (23)				2,472 (43)
Total	855	5	40	3,745	890 (4)	895 (4)	938 (13)	1,161 (24)	116	102		4,102 (45)

The numbers in parentheses indicate international students included in the total.

Graduate Schools

Schools	Programs	Capacity		Current enrollment				
		Admission capacity	Enrollment capacity	1st year	2nd year	3rd year	4th year	Total
Education	Master's program	37	74	32 (5)	37 (2)			69 (7)
	Professional Teacher Development Program	30	60	34 (1)	23			57 (1)
	Subtotal	67	134	66 (6)	60 (2)			126 (8)
Medical Sciences	Master's program	12	24	12	20			32
	Doctoral program	25	105	31	28 (2)	15 (2)	54 (1)	128 (5)
	Subtotal	37	129	43	48 (2)	15 (2)	54 (1)	160 (5)
Engineering	Master's program	253	506	275 (17)	297 (22)			572 (39)
	Doctoral program	22	66	31 (3)	26 (5)	57 (8)		114 (16)
	Subtotal	275	572	306 (20)	323 (27)	57 (8)		686 (55)
	Total	379	835	415 (26)	431 (31)	72 (10)	54 (1)	972 (68)

Research Students, Credited Auditors, etc.

Research students	Credited auditors	Special research students	Special auditing students	Total
11 (5)	7 (4)	4 (3)	48 (48)	70 (60)

International Students

Country	Number	Country	Number
Bangladesh	6 (1)	Uzbekistan	2
Malaysia	31 (9)	Germany	3
Indonesia	5 (5)	France	1 (1)
Philippines	2 (2)	Croatia	1
South Korea	3 (1)	Egypt	2 (1)
Mongolia	1 (1)	Cambodia	1
Vietnam	5 (1)	Tanzania	1
China	102 (49)	Kenya	1
Taiwan	1 (1)	Chile	1
Australia	1	Iraq	1
New Zealand	1	Papua New Guinea	1
Total	173 (72)		

The numbers in parentheses indicate female students included in the total.



Faculty of Education and Regional Studies Graduate School of Education

BUNKYO CAMPUS



Faculty of Education and Regional Studies

The Faculty of Education and Regional Studies aims to develop school teachers with practical teaching skills and individuals who are capable of contributing to the creation and development of prosperous regional communities. By tapping into the outcomes of interdisciplinary and integrated research in education and regional science, the Faculty aims to contribute to the wide-ranging development of the entire society.



Graduate School of Education

The Graduate School of Education takes up the task of fulfilling the social demands for revitalization of universities as a part of ongoing educational reforms and the training of professional teachers, with particular focus on the retraining of in-service teachers. Based on education and research activities among the undergraduate faculty, which has the primary objective of training teachers, the Graduate School aims to develop professionally competent individuals who possess informed insight and practical skills on educational issues in the fields of academia and art, can render services toward the solution of today's educational problems, and are capable of contributing to the development of children who will lead the 21st century.

[UNIQUE PROFESSIONAL ADVANTAGES]

“Network of Inquiry” and “Life Partners” Programs

Encouraging independent learning activities among children, the “Network of Inquiry” program invites children from the local community to work together with UF students in any of nine activity projects. Students help to maintain the children's interest in the activities, which will extend over a long period of time. “Life Partners” is an undergraduate program for extending support to children who somehow find it difficult to stay in school and thus leave the classroom or cannot concentrate in class. Students meet with such children on a weekly basis to offer learning and psychological support.

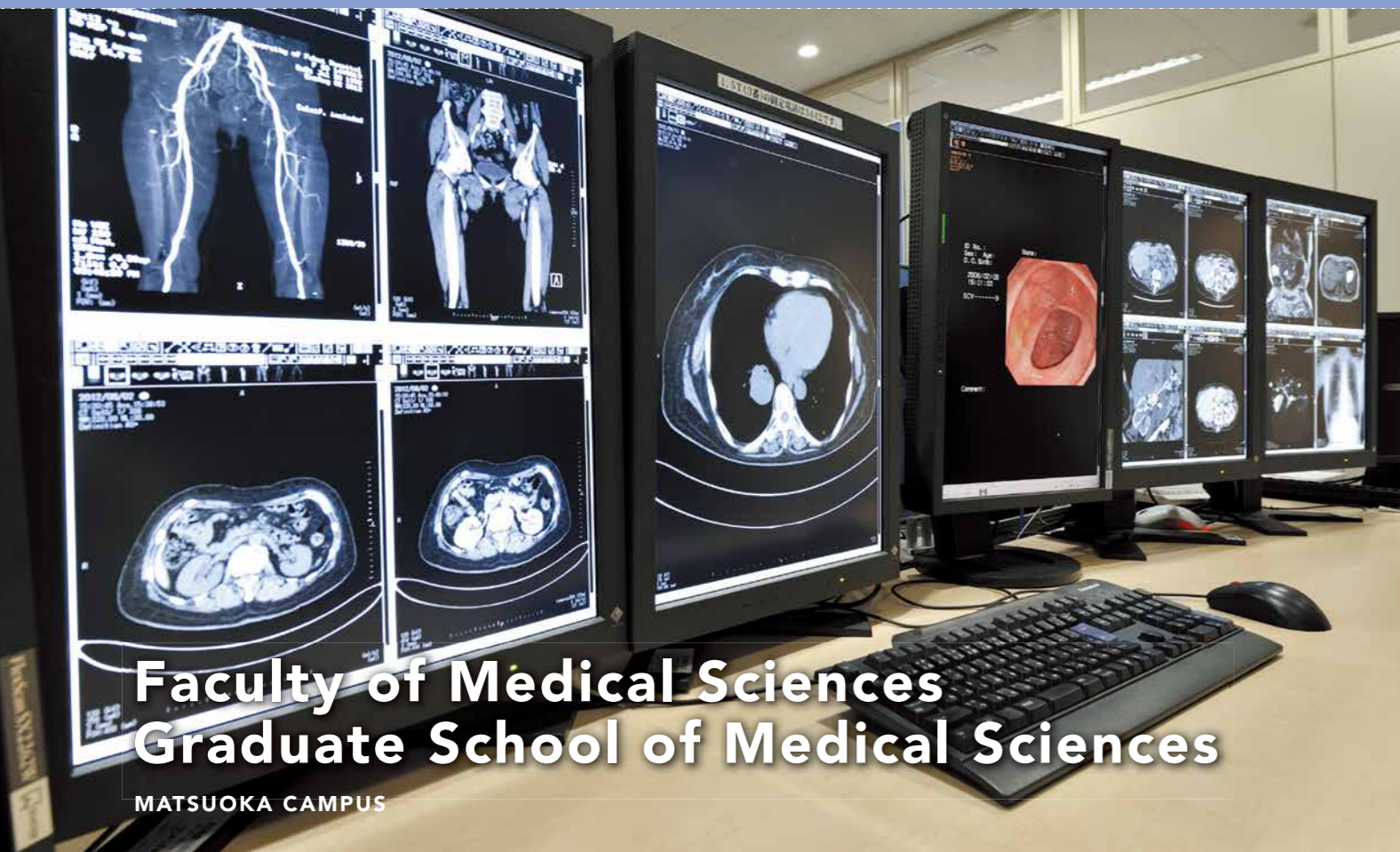


Professional Development of Teachers Programs

To help children to acquire the life skills necessary to survive in the knowledge-based society of the 21st century, schools must provide them with an educational environment where they can learn from each other on their own initiative and grow as learners. The Professional Graduate school helps teachers to hone their teaching expertise, cooperative skills, and organizational management skills, with the aim of developing professional competence in school leaders or core teachers who are expected to be responsible for the future of school education. To achieve this goal, the Professional Development of Teachers Program offers a unique training process. Professors go off campus to affiliated schools in order to develop teachers' competence as professionals.



[BUNKYO CAMPUS]



Faculty of Medical Sciences Graduate School of Medical Sciences

MATSUOKA CAMPUS



Faculty of Medical Sciences

The Faculty of Medical Sciences pursues the following three missions: 1. To assist students to acquire medical ethics with a high respect for life, based on a philosophy of sound character-building; 2. To cultivate trustworthy healthcare professionals and researchers with an advanced level of knowledge in medical and nursing sciences; and 3.

To contribute to the progress in medical and nursing sciences and to the improvement of community healthcare. Guided by these three missions, the Faculty of Medical Sciences has provided practical training to produce a large number of capable healthcare professionals, educators, and researchers who are contributing their services not only in Fukui Prefecture, but also throughout the entire country.

Graduate School of Medical Sciences

The Graduate School of Medical Sciences aims to develop healthcare professionals with an advanced level of knowledge in medical and nursing sciences, capable of conducting high-level medical research, and able to exercise highly specialized clinical techniques as practitioners, who are capable of offering their services to promote human health and well-being and social welfare with a high sense of ethics and a well-rounded personality.

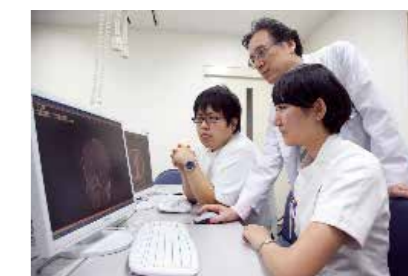
University of Fukui Hospital

As the only advanced treatment hospital in Fukui Prefecture, the University of Fukui Hospital has 600 beds and comprises 25 Clinical Departments, 4 Central Clinical Facilities, and 12 Special Clinical Facilities. In promoting specialized and advanced medical treatments that are not readily available at ordinary medical institutions, the Hospital distinguishes itself together with the Biomedical Imaging Research Center in both research and practice of advanced treatment not generally offered at other hospitals in the country. Under the basic philosophy of “providing the best and most current healthcare services with superior safety and reliability,” the Hospital remains committed to the contribution of its services to community healthcare as a local base hospital through the provision of specialized and advanced healthcare services, and to the development of excellent healthcare professionals.

[UNIQUE PROFESSIONAL ADVANTAGES]

Innovative medical imaging education Increasingly advanced diagnostic imaging that helps doctors to truly “see” their patients

Focusing on training students in diagnostic imaging, the Faculty of Medical Sciences has a dedicated computer server for such education, which is capable of integrated registration of CT, MR, PET, and other advanced clinical and molecular images, as well as anatomical and histopathological images. Imaging data used for training undergraduate students are all stored in this server, and students have access to the database for purposes of self-training. As the medical applications of diagnostic imaging have become increasingly advanced and sophisticated in recent years, it is vital that clinicians re-familiarize themselves with sectional anatomy – the very basis of diagnostic imaging – from their undergraduate studies in order to make the most of such techniques. This educational server is also used for practice related to basic clinical subjects such as human anatomy and histopathology, as well as for clinical practice in radiology.



Confronting a medical issue “Accepting all emergency cases”

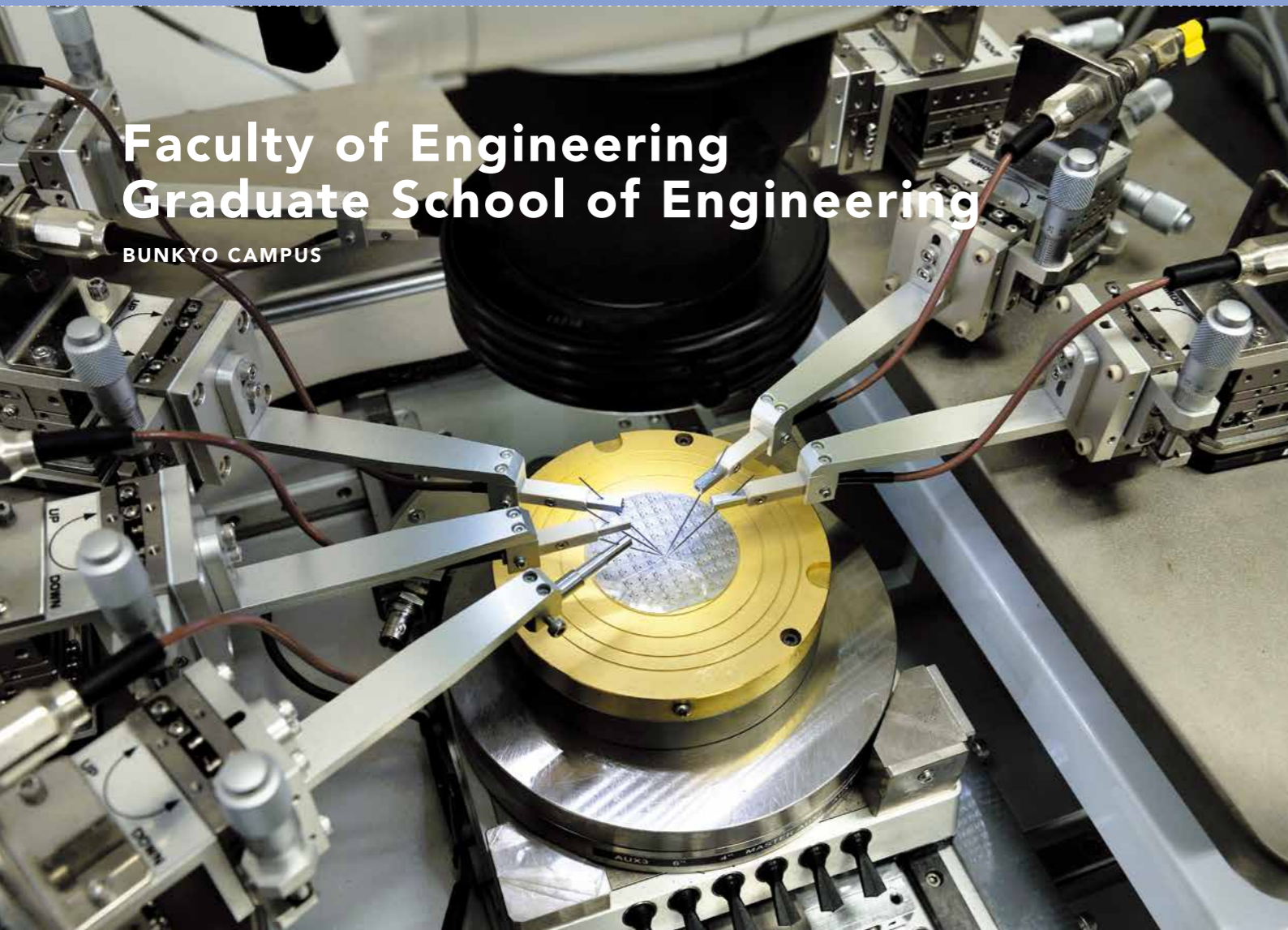
As “the last stronghold for local community healthcare,” the University of Fukui Hospital makes it a rule to accept all patients who are in the most critical condition and provide them with highly advanced medical treatment. Having introduced a North American ER (emergency room) system for the first time among the university hospitals in Japan, it is prepared 24 hours a day, 365 days a year to offer emergency treatment that caters to the needs of all patients from primary to tertiary care.



[UNIVERSITY HOSPITAL]

[MATSUOKA CAMPUS]





Faculty of Engineering Graduate School of Engineering

BUNKYO CAMPUS



Faculty of Engineering

Engineering is a scientific system to enable the sustainable development of human society. The Faculty of Engineering aims to develop well-rounded engineers and researchers who possess creativity, the ability to appreciate things, self-learning ability, and communication skills, as well as basic knowledge, including that of liberal arts, and advanced technical expertise. It also conducts education and research across the entire range of engineering fields with the aim of returning the fruits of such efforts back to society, in order to render its services to the rich and varied development of local and international communities.

Graduate School of Engineering

Engineering plays a role in the enhancement of human well-being by way of developing scientific technology. The Graduate School of Engineering seeks to graduate advanced professional engineers and researchers who possess solid engineering expertise and a high sense of ethics; additionally, graduates are capable of bringing about a rich development of human society in harmony with nature and the environment. At the same time, the Graduate School promotes education and research across a broad range of engineering-related disciplines, from basic research in engineering to the development of cutting-edge technology, in pursuit of its goal to become a research hub in the local region.

[UNIQUE PROFESSIONAL ADVANTAGES]

Creative education that fosters “Imagineers” —engineers who give shape to their dreams

Through the creative education provided by the Faculty of Engineering, students participate in activities with clear-cut goals and are thereby expected to acquire skills considered socially important but difficult to acquire from lectures alone, skills such as identifying and solving problems, putting knowledge to practical application, and building creative teams. In accordance with the three principles of action research—self-participation, self-planning, and self-operation—students take the lead in implementing activities with a teaching staff member serving as an advisor in each of their groups.



Improving first-year education as the foundation for cultivating academic competency

By having first-year students firmly acquire basic academic abilities and form habits of self-learning, the Faculty ensures that students will deepen their sense of self-respect, enhance their will to study, and identify a sense of purpose—key elements that lay the foundations for enhancing their capabilities while at university—thereby maximizing the chances that students will acquire interdisciplinary learning experience, creative thinking ability, and generic skills over the four years before they graduate. In line with this strategy, basic education in math, physics, and other basic subjects has been expanded and, by referring to an individual student’s learning history, such as study hours and progress in credit earning, the Faculty encourages each student to form habits of self-learning toward his or her continual growth.



[BUNKYO CAMPUS]

Research Centers

BUNKYO CAMPUS / MATSUOKA CAMPUS / TSURUGA CAMPUS

Research Institute of Nuclear Engineering

As a center of fundamental and applied nuclear research with easy access to many nuclear facilities in southern Fukui Prefecture, the Research Institute of Nuclear Engineering conducts research for enhanced nuclear safety, disaster prevention and crisis management. It develops earthquake and tsunami-proof nuclear systems and performs studies on swift and appropriate protection measures against radiation. The Research Institute also promotes fundamental research into nuclear safety within the international framework through academic exchange with its counterparts in France, the U.S., and other countries. To develop quality human resources from around the world, it opens its doors to students and researchers from China, South Korea, Vietnam, and other Asian countries, as well as France and the U.S. Through partnership with universities and research institutions in the Hokuriku, Chukyo, and Kansai regions, it also aims to form a research hub with Fukui Prefecture's nuclear facilities serving as its center.



[TSURUGA CAMPUS]

Research Center for Child Mental Development

Children's mental issues, such as refusing to attend school, withdrawing socially, committing crimes (by juveniles of increasingly younger ages), and their underlying difficulties including developmental disorders, have attracted growing attention in recent years. As a result, there is a strong social need for doctors who can draw out the innermost feelings of such children and cure them from the perspective of a specialist, and also for educators who understand and provide them with appropriate care. Founded with the purpose of shedding light on children's mental as well as psychological issues and conducting research and social activities for their treatment and support, the Research Center for Child Mental Development aims to provide solutions to such issues through cooperation from Osaka University, Kanazawa University, Hamamatsu University School of Medicine, and Chiba University.

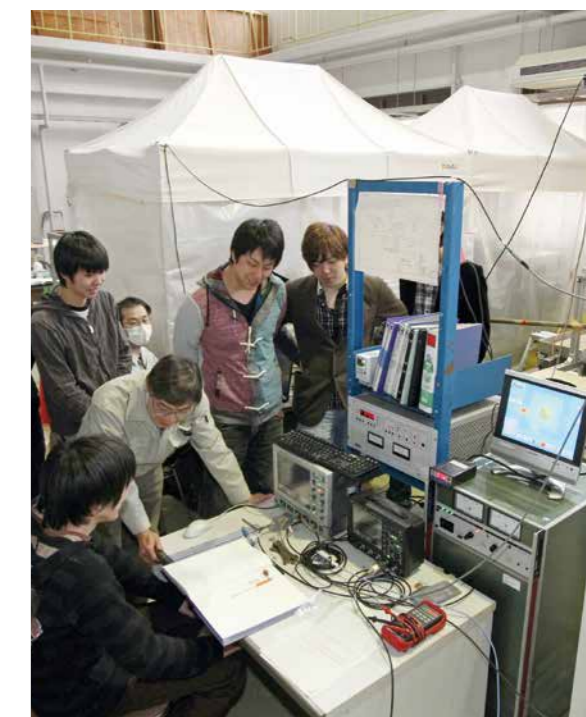


[MATSUOKA CAMPUS]

[BUNKYO CAMPUS]

Research Center for Development of Far-Infrared Region

The Research Center for Development of Far-Infrared Region is carrying out integrated research and development on far-infrared light / terahertz waves, a new region of electromagnetic wave that lies between radio waves and visible light. More specifically, the Center develops advanced version of the Gyrotron, a world-leading high-power terahertz wave source of its own development, and applies it to novel research projects across a wide range of fields such as material science, life science, basic physics, new functional materials development, and energy science. The Center also aims for development of novel terahertz wave generation method and a new spectroscopic technique to push forward researches on bio molecule measurement / imaging and organic conductors / semiconductors. Having signed academic exchange agreements and joint research memorandums with numerous research institutions across the globe, the Center has proactively promoted global research partnerships to gain increasing recognition as a global center for the research in the far-infrared region.



Biomedical Imaging Research Center

The University of Fukui has been promoting the medical use of radiation as basic concept of the Faculty of Medical Sciences since it was founded in 1980. The long awaited research center to realize this mission was established in 1994 as Biomedical Imaging Research Center. The center aims to promote basic and clinical research on medical imaging by means of various non-invasive methods involving electromagnetic waves, such as X-ray and gamma ray. With its research focus on medical applications of electromagnetic waves, the Center aims to advance basic and clinical research on diagnosis and prevention of diseases by using cyclotrons and PET equipment to visualize the bodily functions and clinical conditions of patients. Biomedical imaging or molecular imaging converts the signals into images and uses the information to promote human health and deepen our understanding of life.

[MATSUOKA CAMPUS]



International Exchange

UNIVERSITY OF FUKUI

Utilizing the entire world as a field for learning

The University of Fukui promotes academic and cultural exchange through partnerships with 73 universities and research institutions in 23 countries across the globe. Its alumni association has 12 branches outside of Japan, which were formed by international students after they returned to their homes. The alumni association offers full-scale support for University students who travel to Shanghai and Hangzhou on study abroad programs.

[EUROPE]

- Russia**
- Institute of Applied Physics of the Russian Academy of Sciences
 - The Science and Technology Center of Microtechnology, D.V. Efremov Institute of Electrophysical Apparatus
 - Institute of Physics, Siberian Branch, Russian Academy of Sciences
 - State Establishment Scientific Center of Reconstructive and Restorative Surgery, Siberian Branch, Russian Academy of Medical Sciences
 - Kazan Scientific Centre of Russian Academy of Sciences
- Germany**
- Asia-Africa-Institute, Faculty of Humanities, University of Hamburg
 - The Institute for Pulsed Power and Microwave Technology, Karlsruhe Institute of Technology
 - Institute for Plasma Research, University of Stuttgart

- France**
- Textile and Chemical Institute, Lyon
 - The University of Maine

- Bulgaria**
- Institute of Electronics, Bulgarian Academy of Science

- Poland**
- Faculty of Chemical and Process Engineering, Warsaw University of Technology

- Latvia**
- Institute of Solid State Physics, University of Latvia

- CONSORTIUM**
- Consortium (European Nuclear Education Network Association / Institute for Nuclear Sciences and Technologies / Faculty of Power Engineering, University Politehnica Bucharest / Center for Nuclear Research)

[AFRICA]

- Uganda**
- The Faculty of Medicine, Makerere University

[NORTH AMERICA]

- The USA**
- Rutgers University
 - Mallinckrodt Institute of Radiology, Washington University School of Medicine
 - Clemson University
 - The University of Findlay

- Canada**
- Faculty of Medicine, University of Ottawa

[SOUTH AMERICA]

- Peru**
- Faculty of Engineering Geology, Mining, Metallurgy and Geographic(FEGMMG), San Marcos National University

[ASIA]

- China**
- Xi'an International Studies University
 - Xi'an University of Technology
 - Zhejiang University
 - Beijing Information Science & Technology University
 - Zhejiang Sci-Tech University
 - Tianjin Polytechnic University
 - Inner Mongolia Polytechnic University
 - Nanchang Hangkong University
 - Institute of Plasma Physics, University of Electronic Science and Technology of China
 - Jiangnan University
 - Soochow University
 - Department of Power Engineering, Southeast University
 - Donghua University
 - University of Shanghai for Science and Technology
 - Shanghai Normal University
 - Shenyang Normal University
 - Tianjin University of Science and Technology
 - Wuhan University of Science and Technology
 - The School of Mechatronic Engineering, The School of Electronic & Information Engineering, The School of Automatization & Electric Engineering, Lanzhou Jiaotong University
 - School of Nuclear Science and Technology, Xi'an Jiaotong University
 - Shaoxing People's Hospital
- South Korea**
- College of Engineering, Yonsei University
 - College of Engineering, Dong-A University
 - College of Engineering, Pukyong National University
 - College of Engineering, Yeungnam University
 - College of Education, Pusan National University
 - College of Engineering, Sungkyunkwan University
 - Center for THz-Bio Application Systems, Seoul National University

- Mongolia**
- The Mongolian University of Science and Technology
- Taiwan**
- National Yunlin University of Science and Technology
 - College of Engineering, National Taiwan University of Science and Technology
 - College of Engineering, National Tsing Hua University
 - Tsing Hua Optoelectronics Research Interdisciplinary Center, National Tsing Hua University

- India**
- National Institute of Miners' Health
- Indonesia**
- University of Indonesia
 - Syiah Kuala University
 - Haluoleo University
- Thailand**
- King Mongkut's University of Technology Thonburi
 - Faculty of Engineering and Architecture, Rajamangala University of Technology Isan
 - Institute of East Asian Studies, Thammasat University
 - Central Chest Institute of Thailand
 - Sripatum University

- Bangladesh**
- Khulna University of Engineering & Technology

- UAE**
- Ittihad University

- Philippines**
- National Institute of Physics, University of the Philippines
 - College of Science, De La Salle University

- Vietnam**
- Vietnam International Education Development of the Ministry of Education and Training
 - Electric Power University

- Malaysia**
- University of Malaya

[OCEANIA]

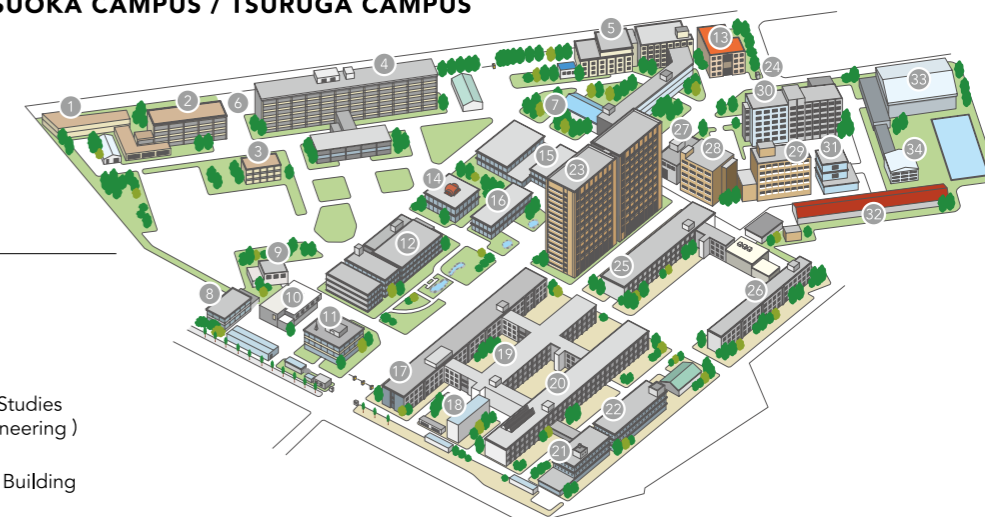
- Australia**
- School of Physics, The University of Sydney

- [OTHERS]
- UMAP(University Mobility in Asia and the Pacific)

Campus Maps

BUNKYO CAMPUS / MATSUOKA CAMPUS / TSURUGA CAMPUS

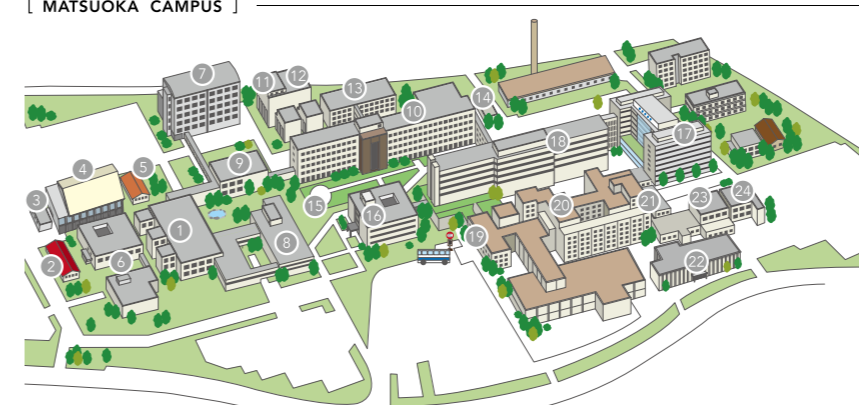
[BUNKYO CAMPUS]



Bunkyo Campus
(Faculty of Education and Regional Studies / Faculty of Engineering)

- | | | |
|---|--|---|
| 1) Music Building | 14) Center for Information Initiative (CII) | 26) Laboratory Building |
| 2) Education and Regional Studies Building No.3 | 15) Student Service Center / Food Service and Stores | 27) Headquarters for Innovative Society-Academia Cooperation Building I |
| 3) Integrated Research Center Educational Practice | 16) Student Commons / Language Center / Global Hub | 28) Headquarters for Innovative Society-Academia Cooperation Building II |
| 4) Education and Regional Studies Building No.1 | 17) Engineering Building No.1-1 | 29) Research Center for Development of Far-Infrared Region(FIR FU) |
| 5) Lecture Hall | 18) International Student Center Branch | 30) Engineering Building No.3 |
| 6) North Gate | 19) Engineering Building No.1-2 | 31) Cryogenic Laboratory |
| 7) Admission Center / International Student Center | 20) Engineering Building No.1-3 | 32) Center for Innovative Research and Creative Leading Education(CIRCLE) |
| 8) Makishima Guest House | 21) Engineering Building No.4(West) | 33) Gymnasium I |
| 9) Health Administration Center | 22) Engineering Building No.4(East) | 34) Gymnasium II |
| 10) Academy Hall | 23) Science Tower I | |
| 11) Administration Office Building | 24) East Gate | |
| 12) University Library / LDC | 25) Engineering Building No.2 | |
| 13) Extracurricular Activities Building | | |

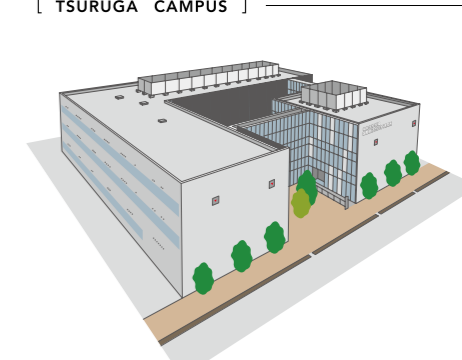
[MATSUOKA CAMPUS]



Matsuoka Campus
(Faculty of Medical Sciences)

- | | |
|---|--|
| 1) Lecturing Bldg. | 13) Graduate Student Research Wing |
| 2) Martial Arts Hall | 14) Pathological Anatomy Bldg. |
| 3) Student Activity Plaza | 15) Plaza |
| 4) Gymnasium | 16) Administration Bldg. (Health Center, Education Affairs Office) |
| 5) Archery Range | 17) Ward A |
| 6) Student Commons / Food Service and Stores | 18) Ward B |
| 7) School of Nursing Bldg. | 19) University Hospital / Kiosk, Bookstore |
| 8) University Library | 20) RI Treatment Ward |
| 9) Basic Practical Training Bldg. | 21) MRI-CT Bldg. |
| 10) Basic Clinical Research Bldg. | 22) Clinical Education Training Center |
| 11) Animal Laboratory | 23) Medicine of Cyclotron Ward |
| 12) RI Laboratory | 24) Biomedical Imaging Research Center |

[TSURUGA CAMPUS]



Tsuruga Campus
(Research Institute of Nuclear Engineering)

Inter-university exchange agreements : 29 universities Inter-department exchange agreements : 44 universities (As of June 2015)