



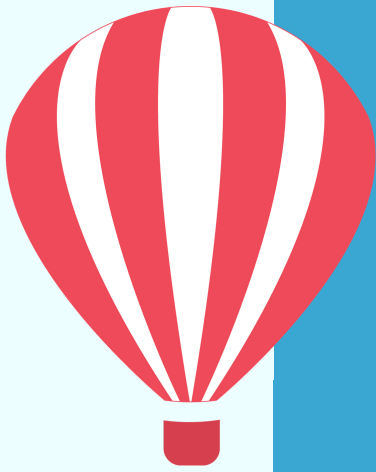
VIET NAM NATIONAL UNIVERSITY HO CHI MINH CITY  
**INTERNATIONAL UNIVERSITY**

# **FACT SHEET**

## **ACADEMIC YEAR**

### **2020 - 2021**





**IU-SEaSAP**

# CONTENT

01 Welcome from the Rector

02 About International University, VNUHCM

03 Overview of the University

04 Overview of IU Student Exchange and Study Abroad  
Program (IU-SEaSAP)

04 Tracks of IU-SEaSAP

05 Study Tour Program / Faculty-led Program

06 Details of IU-SEaSAP

06 Application Package

06 Deadlines

07 Nomination Procedure

07 English Requirements

08 Student Visa

12 Orientation Week

12 Academic Calendar AY 2020/21

12 Academic Matters



*Dear Partners and Students,*

*Xin chào!*

*Welcome to International University - VNUHCM!*

*Established in 2003, International University has been known as the first public English-speaking University in Vietnam.*

*Located in Ho Chi Minh City — the largest metropolis in Vietnam, International University, with the population of approximately 9,000 students, is where academic, research excellence, and student satisfaction constantly drive our every activity and decision.*

*Aiming to become a top Vietnamese research-intensive institution, we are committed to launch research products of highest and national and international significance from establishment of well-equipped facilities and scientific laboratories.*

*I strongly believe that international students will find our University an academic yet lively destination.*

*Rector*

*Dr. Tran Tien Khoa*

## CONTACT US!

**Contact number:**  
+84 (028) 37244270  
Ext: 3617

**Email Address:**  
[issc@hcmiu.edu.vn](mailto:issc@hcmiu.edu.vn)

**Website:**  
[issc.hcmiu.edu.vn](http://issc.hcmiu.edu.vn)

## ABOUT INTERNATIONAL UNIVERSITY, Viet Nam National University Ho Chi Minh City

ABOUT	CONTACT
<p><i>International University – Viet Nam National University Ho Chi Minh City</i></p>	
<ul style="list-style-type: none"> <li>▪ <b>Established:</b> 2003</li> <li>▪ <b>Type:</b> the first public English-speaking University in Vietnam</li> <li>▪ <b>Campus:</b> Ho Chi Minh City, Vietnam</li> <li>▪ <b>Schools &amp; Departments:</b> 11</li> <li>▪ <b>Students:</b> 9,000</li> <li>▪ <b>Study levels:</b> Undergraduate and Graduate degrees</li> <li>▪ <b>Fields of Study:</b> 19 Undergraduate and 13 Graduate programs               <ul style="list-style-type: none"> <li>▪ <b>Faculty members:</b> 187 in total, with 81 PhDs, 28 Associate Professors, 05 Professors, and 73 Masters</li> <li>▪ <b>Staff:</b> 277</li> <li>▪ <b>Academic Calendar:</b> <ul style="list-style-type: none"> <li>- Semester I (Fall Semester): September - January</li> <li>- Semester II (Spring Semester): February - June</li> <li>- Semester III (Summer Semester): July - August</li> </ul> </li> <li>▪ <b>Quality Assurance and Accreditation:</b> <ul style="list-style-type: none"> <li>✓ <b>Institutional Accreditation:</b> <ul style="list-style-type: none"> <li>❖ National Accreditation by Ministry of Education and Training (MOET) (2016);</li> <li>❖ External Assessment by ASEAN University Network Quality Assurance (AUN-QA) (2019)</li> </ul> </li> <li>✓ <b>ABET Accreditation:</b> <ul style="list-style-type: none"> <li>❖ Bachelor of Engineering in Biomedical Engineering (2019),</li> <li>❖ Bachelor of Engineering in Electrical Engineering (2019)</li> </ul> </li> <li>✓ <b>ASEAN University Network Quality Assurance at Program Level:</b> <ol style="list-style-type: none"> <li>1. Bachelor of Science in Computer Science (2009, 2017)</li> <li>2. Bachelor of Science in Biotechnology (2011, 2017)</li> <li>3. Bachelor of Arts in Business Administration (2012, 2017)</li> <li>4. Bachelor of Engineering in Electrical Engineering (2013)</li> <li>5. Bachelor of Engineering in Industrial and Systems Engineering (2015)</li> <li>6. Bachelor of Engineering in Biomedical Engineering (2015)</li> <li>7. Bachelor of Engineering in Food Technology (2017)</li> <li>8. Master of Science in Biotechnology (2016)</li> <li>9. Master of Engineering in Industrial Systems Engineering (2016)</li> <li>10. Bachelor of Food Technology (2017)</li> <li>10. Bachelor of Arts in Finance and Banking (2018)</li> <li>11. Bachelor of Engineering in Civil Engineering (2018)</li> <li>12. Master of Business Administration (2019)</li> </ol> </li> </ul> </li> </ul> </li> </ul>	<p><b>International University - Viet Nam National University Ho Chi Minh City</b> Address: Quarter 6, Linh Trung Ward, Thu Duc District, Ho Chi Minh City, Vietnam Phone: +84 (028) 37244270 Ext: 3220 Website: <a href="https://hcmiu.edu.vn/">https://hcmiu.edu.vn/</a></p> <p><b>Student Exchange Office</b> International Student Service Center (ISSC) Office of External and Public Relations International University, Room A2.604 Address: Quarter 6, Linh Trung Ward, Thu Duc district Phone: +84 (028) 37244270 Ext 3617 Website: <a href="https://issc.hcmiu.edu.vn/">https://issc.hcmiu.edu.vn/</a></p> <ul style="list-style-type: none"> <li>❖ <b>Ms. DINH, Kim Phung</b> Head, International Student Service Center <a href="mailto:dkphung@hcmiu.edu.vn">dkphung@hcmiu.edu.vn</a></li> <li>❖ <b>Ms. LE, Huynh Bao Tram</b> Inbound Coordinator <a href="mailto:lhbtram@hcmiu.edu.vn">lhbtram@hcmiu.edu.vn</a></li> <li>❖ <b>Ms. NGUYEN, Thanh Hang</b> Outbound Coordinator <a href="mailto:nthang@hcmiu.edu.vn">nthang@hcmiu.edu.vn</a></li> </ul>



## OVERVIEW OF THE UNIVERSITY

### SCHOOLS AND DEPARTMENTS

SCHOOLS	DEPARTMENTS
1. Business	1. English
2. Computer Science and Engineering	2. Civil Engineering
3. Electrical Engineering	3. Mathematics
4. Biotechnology	4. Physics
5. Industrial Engineering and Management	5. Environmental Engineering
6. Biomedical Engineering	

### TRAINING LEVELS

BACHELOR LEVEL	MASTER LEVEL	PH.D LEVEL
1. Business Administration	1. Business Administration	1. Business Administration
2. Finance & Banking	2. Biotechnology	2. Biotechnology
3. Control Engineering & Automation	3. Information Technology Management	3. Biomedical Engineering
4. Biomedical Engineering	4. Electrical Engineering	4. Public Management (Vietnamese only)
5. Electronics & Telecommunications Engineering	5. Biomedical Engineering	5. Business Administration (Dual Degree Program with Swinburne University of Technology)
6. Information Technology	6. Food Technology	
7. Industrial & Systems Engineering	7. Public Management (Vietnamese only)	
8. Logistics and Supply Chain Management	8. Industrial & Systems Engineering	
9. Civil Engineering		
10. Space Engineering		
11. Environmental Engineering		
12. Biotechnology		
13. Accounting		
14. Food Technology		
15. Applied Mathematics		
16. Chemical Engineering		
17. Data Science		
18. Chemistry		
19. English Linguistics		

## OVERVIEW OF IU STUDENT EXCHANGE and STUDY ABROAD PROGRAM

### IU STUDENTS EXCHANGE and STUDY ABROAD PROGRAMS (IU-SEaSAP)

#### 1. IU STUDENT EXCHANGE PROGRAM

- **Incoming Exchange Program:** IU offers international students an opportunity to explore academic interests and improve cross-cultural understanding by taking one or two semesters at IU. Students enrolling in these programs will not be awarded a degree from IU; however, they can transfer credits to their home university upon completion of their study in Vietnam.
- **Outgoing Exchange Program:** IU students are provided with a chance to earn valuable international experience and cultural awareness by involving in the study at one of IU's partners institutions around the globe in one or two semesters. Students enrolled in these programs will not be awarded the degree from the partner university; however, they can transfer credits to IU upon completion of their study overseas.

#### 2. STUDY ABROAD PROGRAMS

- **Incoming Study Abroad Program:** a regular full tuition program for international students whose home university is not an IU partner or students who are not selected for the exchange program. Students enrolling in this program is responsible for paying the tuition fee to IU.
- **Outgoing Study Abroad Program:** a regular full tuition program for IU students who desire to study at non-IU exchange partners or students who are not selected for the exchange program. IU students going on this program should pay tuition fee to the host university.

## STUDY TOUR PROGRAM / FACULTY-LED PROGRAM

The faculty-led/non faculty-led program is customized to provide participants with cultural experiences, academic opportunities, closely address participants’ interests as well as bring them closer to values which just can be found in Vietnam.

Basically, IU offers tailor-made study tour program for a duration from 01 to 02 weeks. Please contact us for further details.

<b>Cultural Activities</b>	<b>Academic Activities</b>
Exploration Tours	Lectures
Market Tour	Company Visit
Field Trips	Campus Tour
Vietnamese Traditional Form of Entertainment	Group Discussion
Cultural-Oriented Classes	Project/Presentation

## SERVICES FOR INCOMING INTERNATIONAL STUDENTS AND SCHOLARS

To assist international students and scholars with the challenges that they might face during their time abroad, we provide supporting services as follows:

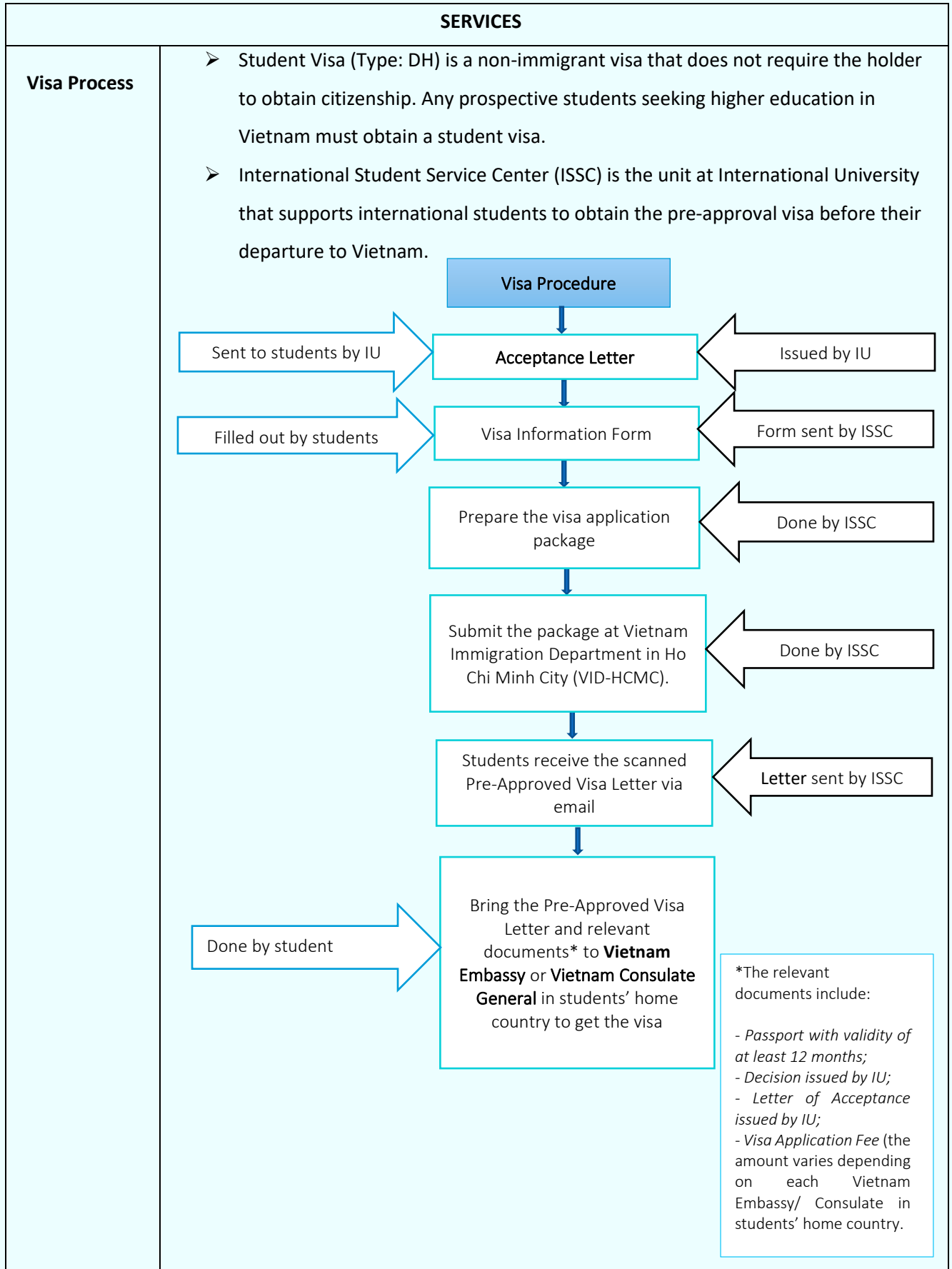
Immigration & Visa	Academic Support and Consulting
Health Insurance	IU Policies and Procedures
Accommodation	Daily Challenges (personal and social matters)
Orientation	Cultural Adjustment
Buddy Program	Alumni Network for International Students

## DETAILS OF IU STUDENT EXCHANGE AND STUDY ABROAD PROGRAM

APPLICATION INFORMATION			
<b>Eligibility</b>	<p><b>Entry Requirements</b></p> <p>To be considered for the Student Exchange and Study Abroad Programs, undergraduate and graduate applicants must:</p> <ul style="list-style-type: none"> <li>– Complete at least one year of full-time study (undergraduate level) or one semester of full-time study (graduate level)</li> <li>– Achieve GPA at least of 2.5 on a 4.0 scale or equivalent</li> <li>– Accept to be a full-time exchange student at IU (no less than 12 credits per semester)</li> <li>– Have a letter of nomination from the home institution as required for exchange students (or letter of approval for participating in Study Abroad Program at IU)</li> </ul>		
<b>Required Application</b>	<b>Step 1</b>	<b>Nomination</b>	To be an exchange student, student must be nominated by the home institution.
<b>Documents</b>	<b>Step 2</b>	<b>Complete the Application Package</b>	<p>Fill in and attach all required documents:</p> <ul style="list-style-type: none"> <li>– An application form (for exchange program)</li> <li>– A letter of nomination from your home university (or letter of approval for participating in Study Abroad Program at International University)</li> <li>– An official transcript</li> <li>– An evidence of English Proficiency</li> <li>– A copy of passport</li> <li>– <i>All documents should be certified and translated into English.</i></li> </ul>
	<b>Step 3</b>	<b>Submission</b>	Submit the applications to the Student Exchange office at the Home Institution.
	<b>Step 4</b>	<b>Application Outcome</b>	<p>Once student's home institution confirms that student is selected for the program, he/she will receive an official notification package from IU, including:</p> <ul style="list-style-type: none"> <li>– An Acceptance Letter</li> <li>– General information before your arrival includes Visa, Accommodation, Health insurance, Orientation Days, Academic schedule</li> <li>– Registrar forms for visa, accommodation, buddy program, airport pick up service, courses</li> </ul> <p>At the same time, IU incoming coordinator will assist student for the next steps.</p>



<b>Nomination Deadlines</b>	<ul style="list-style-type: none"> <li>➤ <b>May 01 for Semester 1 (September – January): <i>Fall Semester</i></b></li> <li>➤ <b>October 01 for Semester 2 (January – June): <i>Spring Semester</i></b></li> </ul>
<b>Nomination Procedure</b>	<p>An email contains following information should be sent to IU Inbound Coordinator address:</p> <ul style="list-style-type: none"> <li>– Name and email address of the student(s)</li> <li>– Field of study</li> <li>– Level of desired study at IU (undergraduate or graduate level)</li> <li>– Duration of exchange term</li> </ul>
<b>Application Deadlines</b>	<ul style="list-style-type: none"> <li>➤ <b>May 15<sup>th</sup> for Semester 1 (September – January): <i>Fall Semester</i></b></li> <li>➤ <b>October 15<sup>th</sup> for Semester 2 (January – June): <i>Spring Semester</i></b></li> </ul>
<b>Application Procedure</b>	<p>Students have 02 weeks to complete the Application package and send to IU Inbound Coordinator.</p> <p>Once a student is accepted to IU they will received the Letter of Acceptance and the supporting documents of courses registration, accommodation options and airport pick up service by email. The original Letter of Acceptance will be sent to student home university (if required).</p>
<b>English requirements</b>	<p>No English proficiency assessment is required for students who live in an English-speaking country or study in a tertiary institution where the language of instruction is English.</p> <p>If students are not from an English-speaking country or if the language of instruction at students' Home Institution is not English, one of the following certificates is applied:</p> <ul style="list-style-type: none"> <li>– IELTS minimum overall band score of 6.0 (no sub-score bellow 5.5);</li> <li>– TOEFL (PBT) minimum score of 550;</li> <li>– TOEFL (CBT) minimum score of 213;</li> <li>– TOEFL (iBT) minimum score of 61 (no sub-score bellow 19);</li> <li>– Unicert 1 (Certified by German Academic Exchange Service – DAAD);</li> <li>– CEFR Level B1 (Common European Framework of Reference's English Certificate);</li> <li>– ISEP's Language Proficiency Report (accepted for students from ISEP-Exchange programs);</li> <li>– Language Confirmation Letter from IU Partner Universities</li> </ul>



	<p><b>Notes:</b></p> <ul style="list-style-type: none"> <li>- Visa on Arrival is issued only when there are not any representative diplomatic offices such as Vietnam Embassy or Vietnam Consulate General in students' home country;</li> <li>- If student enters Vietnam using different types of visa such as tourist visa: student need to exit our country and re-enter in order to apply for DH student visa.</li> </ul>												
<p><b>Cost of Living</b></p>	<p>Students will prepare at least USD 3,200 (or 2,720 EUR) per semester for living costs in Vietnam, including room, meals, textbooks, materials, student's activities and personal expenses.</p> <p>The table below shows an approximate budget for a student taking the exchange semester at IU. The amount varies depending on each student's specific needs.</p> <table border="1" data-bbox="418 667 1490 930"> <tr> <td>Room</td> <td>280 USD USD/month + 1 or 2 month(s) rent deposit</td> </tr> <tr> <td>Food</td> <td>150 USD/month</td> </tr> <tr> <td>Public transportation*</td> <td>40 USD</td> </tr> <tr> <td>Monthly utility (electricity, water, garbage, internet)</td> <td>60 USD</td> </tr> <tr> <td>Personal expenses</td> <td>50 USD</td> </tr> <tr> <td><b>Average total per month</b></td> <td><b>Around 580 USD</b></td> </tr> </table>	Room	280 USD USD/month + 1 or 2 month(s) rent deposit	Food	150 USD/month	Public transportation*	40 USD	Monthly utility (electricity, water, garbage, internet)	60 USD	Personal expenses	50 USD	<b>Average total per month</b>	<b>Around 580 USD</b>
Room	280 USD USD/month + 1 or 2 month(s) rent deposit												
Food	150 USD/month												
Public transportation*	40 USD												
Monthly utility (electricity, water, garbage, internet)	60 USD												
Personal expenses	50 USD												
<b>Average total per month</b>	<b>Around 580 USD</b>												
<p><b>Buddy Program</b></p>	<p>Buddy Program is offered to international students with no cost. It is a program for newly-admitted international undergraduates &amp; incoming exchange students. IU offers the Buddy Program, in which new international students will be paired up with local students (Buddy Mentors) who provide a helping hand and friendship to the international new comers at IU.</p> <ul style="list-style-type: none"> <li>➤ IU buddies will contact incoming students via email to get to know about their new friends, and help incoming students to be well-prepared prior to their departure to Vietnam, normally in middle July.</li> <li>➤ IU buddies also provide assistance during the stay and studies of international students in Vietnam.</li> </ul>												
<p><b>Airport Pick-up</b></p>	<p>IU also offers Airport pick up service for new international students.</p> <ul style="list-style-type: none"> <li>➤ Airport Pick-Up Form need to be completed <b>at least 7 working-days</b> before students' arrival in Ho Chi Minh City;</li> <li>➤ International students will then be picked up at Tan Son Nhat International Airport by their buddy and transported directly to the accommodation destination of their choice. However, international students are responsibility for the cost of this trip.</li> </ul>												
<p><b>Web Account</b></p>	<p>On the First Day of the Orientation Week, international student will be provided an account that gives them access to university's e-mail, Edusoft web (including course registration, time table, exam schedule, student scores) and Blackboard.</p> <p><i>*Note: IU offers free wireless around its campuses</i></p>												

<b>Orientation Week</b>	<b>Orientation Program</b>	
	<b>Arrival in Ho Chi Minh City</b>	International students are advised to arrive in Ho Chi Minh City at least 1 week prior to the start of each semester.
	<b>First Day</b>	The first day of the Orientation Week is the most important day of the Week since all of the important information relating to students' studies (accounts and courses registration), living matters in Ho Chi Minh City, daily challenges, etc. will be inducted on this day.
	<b>Second Day</b>	Tour exploring Ho Chi Minh City and nearby areas with IU Buddies
	<b>Third Day</b>	Outgoing Trip to Mekong Delta
<i>Dates in details will be updated one month before the start of semester</i>		
<b>Health Insurance</b>	<ul style="list-style-type: none"> <li>➤ There's a wide range of health insurance plans and service providers in Vietnam, IU can assist international students to purchase one (if needed). International students are responsible for the cost of such insurance.</li> <li>➤ In case students purchase their own overseas health insurance from their home country, please make sure that this insurance valid through their stay in Vietnam. IU reserves the right to ask for proof of insurance.</li> </ul>	
<b>Where to go for questions?</b>	<b>International Student Service Center (ISSC)</b> Office of External and Public Relations Hall A2, 6th Floor, Room A2.604 Tel: +84 (28) 3724-4270 – Ext: 3617 Email: <a href="mailto:issc@hcmiu.edu.vn">issc@hcmiu.edu.vn</a> <b>Morning:</b> 9:00 am to 11:00 am; <b>Afternoon:</b> 2:00 pm to 3:30 pm	

<b>SEMESTER INFORMATION</b>		
<b>Type of academic calendar</b>	<b>Three-semester system:</b>	
	<ul style="list-style-type: none"> <li>o Semester 1 : September – January/February</li> <li>o Semester 2 : January/February – June</li> <li>o Summer semester : June – August</li> </ul>	
<b>What are the academic calendar dates?</b>	<b>UNDERGRADUATE PROGRAMS (2020-2021)</b>	
	<b>Semester 1 (20 weeks)</b>	
	Start of courses	07 September, 2020
	Midterm Exam	02 - 14 November, 2020
	Final Exams	11 - 23 January, 2021
	<b>Semester 2 (20 weeks)</b>	
	Start of courses	25 January, 2021
	Midterm Exam	05 - 17 April, 2021
	Final Exams	14 - 26 June, 2021
	<b>Summer Semester (8 weeks)</b>	
	Start of courses	28 June, 2021
	End of courses	21 August, 2021

	<table border="1"> <tr> <th colspan="2" style="text-align: center;"><b>GRADUATE PROGRAMS (2020-2021)</b></th> </tr> <tr> <th colspan="2"><b>Semester 1 (20 weeks)</b></th> </tr> <tr> <td>Start of courses</td> <td>07 September, 2020</td> </tr> <tr> <td>End of courses</td> <td>23 January, 2021</td> </tr> <tr> <td colspan="2">Including examination period. The examination schedule may vary depending on each school/department</td> </tr> <tr> <th colspan="2"><b>Semester 2 (20 weeks)</b></th> </tr> <tr> <td>Start of courses</td> <td>25 January, 2021</td> </tr> <tr> <td>End of courses</td> <td>26 June, 2021</td> </tr> <tr> <td colspan="2">Including examination period. The examination schedule may vary depending on each school/department</td> </tr> <tr> <th colspan="2"><b>Summer Semester (8 weeks)</b></th> </tr> <tr> <td>Start of courses</td> <td>28 June, 2021</td> </tr> <tr> <td>End of courses</td> <td>28 August, 2021</td> </tr> </table>	<b>GRADUATE PROGRAMS (2020-2021)</b>		<b>Semester 1 (20 weeks)</b>		Start of courses	07 September, 2020	End of courses	23 January, 2021	Including examination period. The examination schedule may vary depending on each school/department		<b>Semester 2 (20 weeks)</b>		Start of courses	25 January, 2021	End of courses	26 June, 2021	Including examination period. The examination schedule may vary depending on each school/department		<b>Summer Semester (8 weeks)</b>		Start of courses	28 June, 2021	End of courses	28 August, 2021
<b>GRADUATE PROGRAMS (2020-2021)</b>																									
<b>Semester 1 (20 weeks)</b>																									
Start of courses	07 September, 2020																								
End of courses	23 January, 2021																								
Including examination period. The examination schedule may vary depending on each school/department																									
<b>Semester 2 (20 weeks)</b>																									
Start of courses	25 January, 2021																								
End of courses	26 June, 2021																								
Including examination period. The examination schedule may vary depending on each school/department																									
<b>Summer Semester (8 weeks)</b>																									
Start of courses	28 June, 2021																								
End of courses	28 August, 2021																								
<b>Holidays/ Days-off</b>	<ul style="list-style-type: none"> <li>❖ <b>Semester 1:</b> <ul style="list-style-type: none"> <li>· New Year 's day: 01 January 2021</li> </ul> </li> <li><b>Note:</b> There is no day-off on Christmas Day</li> <li>❖ <b>Semester 2:</b> <ul style="list-style-type: none"> <li>· Lunar New Year: 08 to 20 February 2021</li> <li>· Hung King's day: 21 April 2021</li> <li>· Independence Day and Labor Day: 30 April to 01 May 2021</li> </ul> </li> </ul>																								
<b>COURSE INFORMATION</b>																									
<b>What is the main language of instruction?</b>	English																								
<b>Course Registration/ Dropping or Withdrawing from the course</b>	<ul style="list-style-type: none"> <li>➤ The information of course registration will be provided to exchange students two months prior to the beginning of each semester. Students should have the approval from their home institution before participating in any courses.</li> <li>➤ One week after the classes begin, students cannot drop or withdraw the courses. The courses that students withdraw after the drop period will not count as the completed credit toward their transcript.</li> </ul>																								
<b>What is the standard full-time workload?</b>	<p><b>Semester 1 (or Semester 2):</b> 12 credits ≤ Workload per semester ≤ 24 credits</p> <p><b>Summer Semester:</b> 6 credits ≤ Workload per semester ≤ 12 credits</p> <p><b>Note:</b> Each credit is considered to equate to approximately 15 hours, including all forms of teaching contact.</p>																								
<b>Course Registration</b>	<p>Students are expected to complete course registration online before their arrival in Vietnam (in August for Fall Semester and in December for Spring Semester). The process includes:</p> <p><b>1. Before the registration</b></p> <p>Students are provided with (1) an IU account to log in IU registration platform named Edusoftweb at <a href="http://edusoftweb.hcmiu.edu.vn/">http://edusoftweb.hcmiu.edu.vn/</a>, (2) a list of opened subjects for Fall/Spring Semester to prepare for the registration - login and testing account is highly recommended, and (3) notification on specific timeline (GMT+7) to register courses.</p>																								

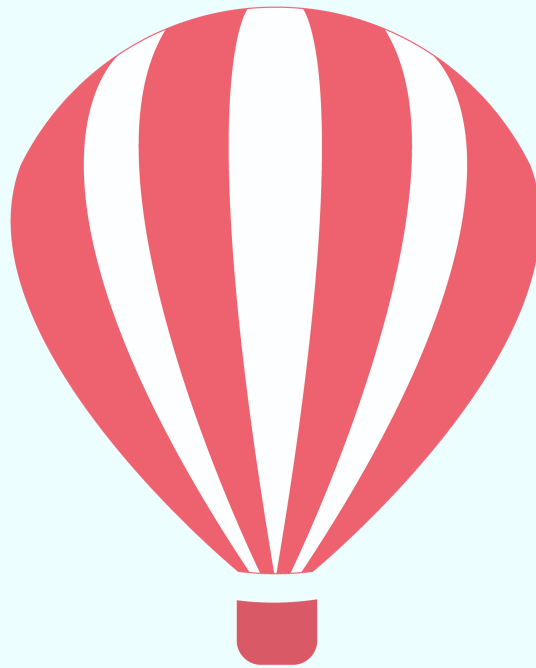
	<p><b>2. During the registration</b></p> <p>Students log in the registration system at <a href="http://edusoftweb.hcmiu.edu.vn/">http://edusoftweb.hcmiu.edu.vn/</a> by using provided user names and passwords</p> <p><i>*Minimum credits to be taken per semester: 12</i></p> <p><i>*Maximum credits to be taken per semester: 24</i></p> <p><b>3. After the registration</b></p> <p>Students can modify their own Timetable and add/drop courses only in the first week of each semester.</p> <p><i>*Students can always seek further support from IU Inbound Coordinator.</i></p>																							
<b>CREDIT / GRADING SYSTEM AND COURSE ASSESSMENT</b>																								
<b>Credit system</b>	<ul style="list-style-type: none"> <li>• IU has a similar credit system to the U.S system. Every 1 IU credit equals to 1.7 ECTS credit.</li> <li>• Each credit represents 15 hours of theoretical lectures per semester, plus 30 hours of student self-preparation time at home</li> <li>• Normally each course is awarded 3 credits and each contact hour is presented 45 minutes spending time in the classroom.</li> </ul>																							
<b>Grading system</b>	<b>Classification</b>	<b>100 – Point Grading</b>	<b>Letter Grades</b>	<b>4- Point Grading</b>																				
<b>Passing</b>																								
<table border="1" style="width: 100%; border-collapse: collapse;"> <tr> <td style="width: 20%;"><b>Excellent</b></td> <td style="width: 30%;"><math>90 \leq \text{GPA} \leq 100</math></td> <td style="width: 20%; text-align: center;">A+</td> <td style="width: 30%; text-align: center;">4.0</td> </tr> <tr> <td><b>Very good</b></td> <td><math>80 \leq \text{GPA} &lt; 90</math></td> <td style="text-align: center;">A</td> <td style="text-align: center;">3.5</td> </tr> <tr> <td><b>Good</b></td> <td><math>70 \leq \text{GPA} &lt; 80</math></td> <td style="text-align: center;">B+</td> <td style="text-align: center;">3.0</td> </tr> <tr> <td><b>Fair</b></td> <td><math>60 \leq \text{GPA} &lt; 70</math></td> <td style="text-align: center;">B</td> <td style="text-align: center;">2.5</td> </tr> <tr> <td><b>Average</b></td> <td><math>50 \leq \text{GPA} &lt; 60</math></td> <td style="text-align: center;">C</td> <td style="text-align: center;">2.0</td> </tr> </table>					<b>Excellent</b>	$90 \leq \text{GPA} \leq 100$	A+	4.0	<b>Very good</b>	$80 \leq \text{GPA} < 90$	A	3.5	<b>Good</b>	$70 \leq \text{GPA} < 80$	B+	3.0	<b>Fair</b>	$60 \leq \text{GPA} < 70$	B	2.5	<b>Average</b>	$50 \leq \text{GPA} < 60$	C	2.0
<b>Excellent</b>	$90 \leq \text{GPA} \leq 100$	A+	4.0																					
<b>Very good</b>	$80 \leq \text{GPA} < 90$	A	3.5																					
<b>Good</b>	$70 \leq \text{GPA} < 80$	B+	3.0																					
<b>Fair</b>	$60 \leq \text{GPA} < 70$	B	2.5																					
<b>Average</b>	$50 \leq \text{GPA} < 60$	C	2.0																					
<b>No passing</b>																								
<table border="1" style="width: 100%; border-collapse: collapse;"> <tr> <td style="width: 20%;"><b>Weak</b></td> <td style="width: 30%;"><math>40 \leq \text{GPA} &lt; 50</math></td> <td style="width: 20%; text-align: center;">D+</td> <td style="width: 30%; text-align: center;">1.5</td> </tr> <tr> <td rowspan="2"><b>Very weak</b></td> <td><math>30 \leq \text{GPA} &lt; 40</math></td> <td style="text-align: center;">D</td> <td style="text-align: center;">1.0</td> </tr> <tr> <td><math>\text{GPA} &lt; 30</math></td> <td style="text-align: center;">F</td> <td style="text-align: center;">0.0</td> </tr> </table>					<b>Weak</b>	$40 \leq \text{GPA} < 50$	D+	1.5	<b>Very weak</b>	$30 \leq \text{GPA} < 40$	D	1.0	$\text{GPA} < 30$	F	0.0									
<b>Weak</b>	$40 \leq \text{GPA} < 50$	D+	1.5																					
<b>Very weak</b>	$30 \leq \text{GPA} < 40$	D	1.0																					
	$\text{GPA} < 30$	F	0.0																					
<b>Course Assessment</b>	<ul style="list-style-type: none"> <li>➤ Assignment and class participation: 20-40%</li> <li>➤ Mid-term exam: 20 - 30%</li> <li>➤ Final exam: 40 - 60%</li> </ul>																							



<p><b>Possibilities for students to do their final project work/thesis work at the host institution? Bachelor/master thesis? (Supervisor and registration on a project course is necessary.)</b></p>	<p>Yes, for Bachelor and Master program either.</p>
--	---



**INTERNATIONAL STUDENT SERVICE CENTER (ISSC)**  
**Tel: +84 (28) 3724 4270 - Ext: 3617 | Fax: +84 (28) 3724 4271**  
**Email: [issc@hcmiu.edu.vn](mailto:issc@hcmiu.edu.vn) | Website: [issc.hcmiu.edu.vn](http://issc.hcmiu.edu.vn)**



**IU-SEaSAP**